

TRANSFER PAGE 71ds-353

Section line between SECS 2&3

LEGACY DEVELOPMENT
OF THE QUAD CITIES
5-18-04 17377-04

SEC 3

55

THE LEGENDS OF HOPEWELL CREEK 1ST ADD.
OUTLOT 'A'

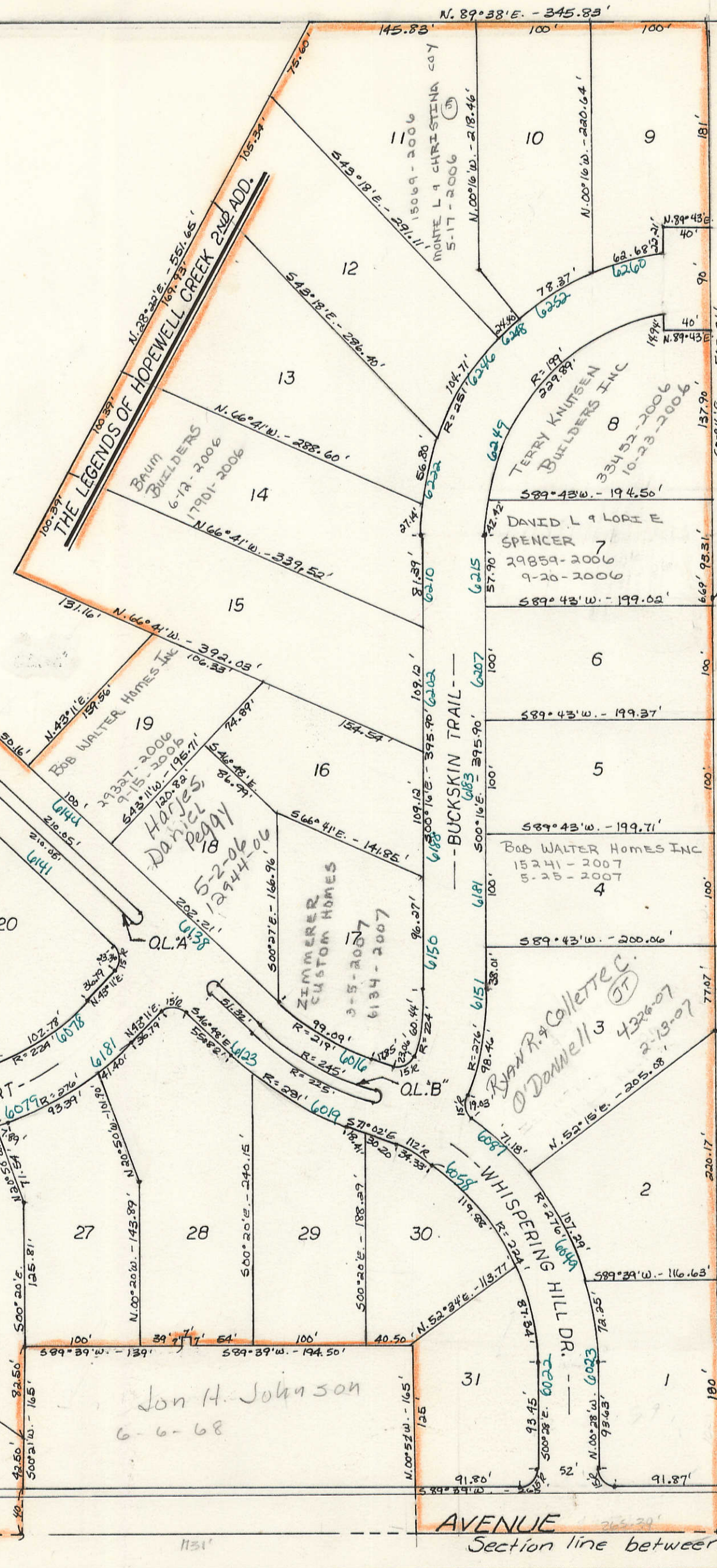
32
10 11

SW Corner SEC 2-78-4

HOPEWELL AVENUE

SEC 11

1
VOL G



JOHN H. Van Horst TRUST
32906-06

51

5-19-64
2-5-65
7-30-68

JOHN H. VAN HORST
5-6-2004 #204-11994

Section line between SECS 2&11